

Ganib Appliance Setup Guide

1.0 Overview

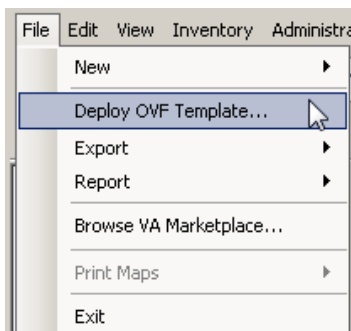
The Ganib virtual appliance is virtual machine with a Linux operating system and an installed instance of Ganib with all of its prerequisites.

2.0 Import Virtual Appliance

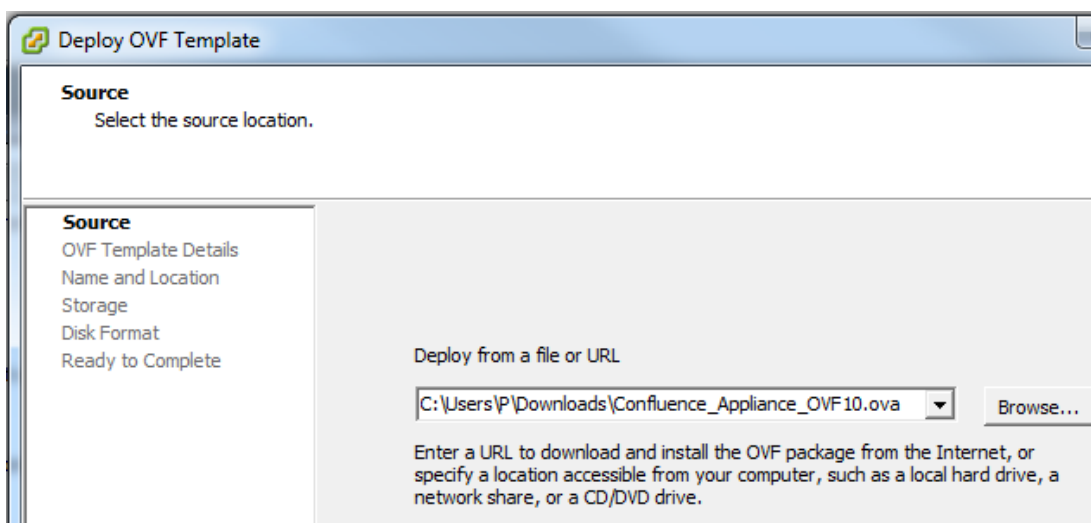
The following directions show how to import a virtual appliance into VMware vSphere, VMware Workstation, or Oracle Virtualbox.

2.1 VMware vSphere

1. In your vSphere Client, from the File menu, select Deploy OVF Template.

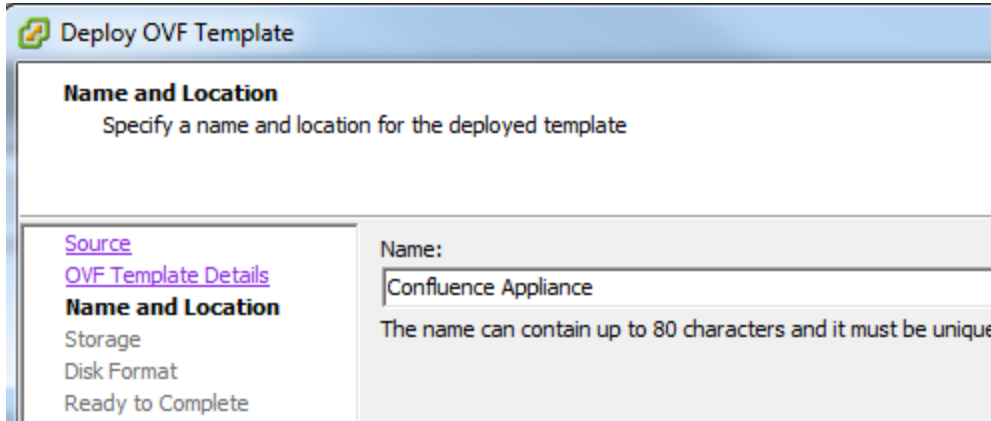


2. For Source, browse to the location of your OVA file.



Ganib Appliance Setup Guide

3. For Name and Location, give the appliance a descriptive name.



Deploy OVF Template

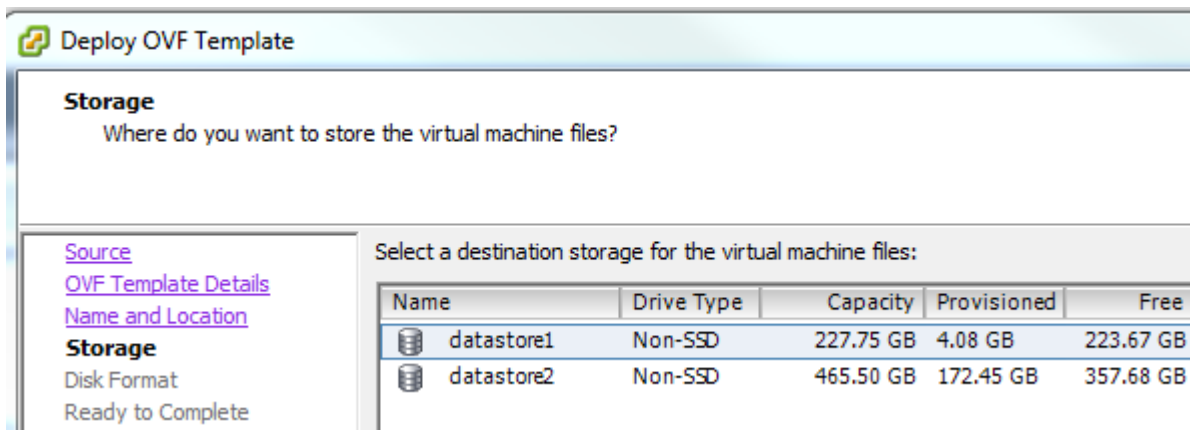
Name and Location
Specify a name and location for the deployed template

[Source](#)
[OVF Template Details](#)
Name and Location
Storage
Disk Format
Ready to Complete

Name:
Confluence Appliance

The name can contain up to 80 characters and it must be unique

4. For Storage, select the appropriate datastore.





Deploy OVF Template

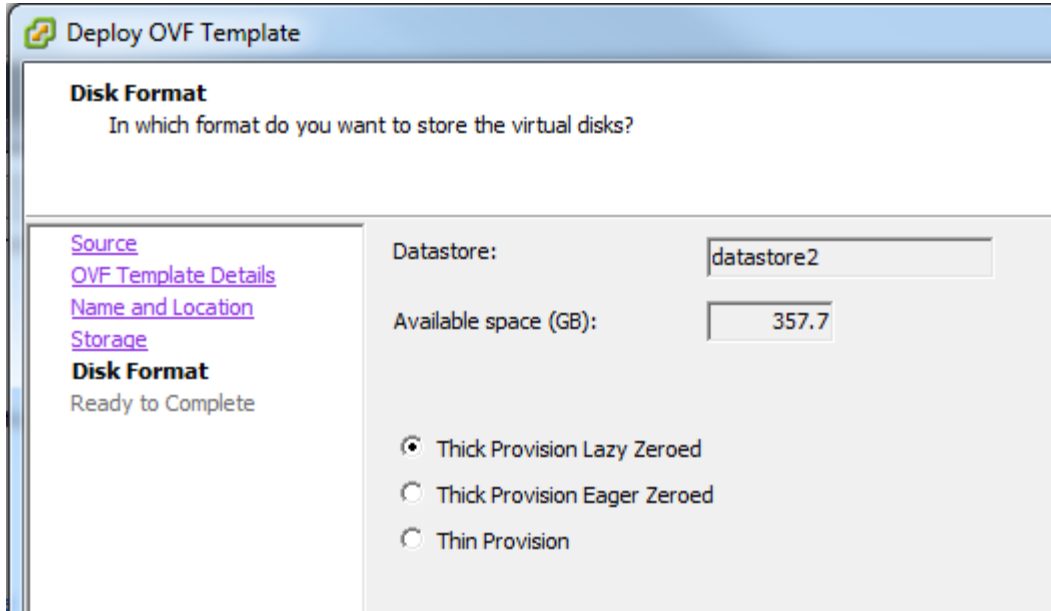
Storage
Where do you want to store the virtual machine files?

[Source](#)
[OVF Template Details](#)
[Name and Location](#)
Storage
Disk Format
Ready to Complete

Select a destination storage for the virtual machine files:

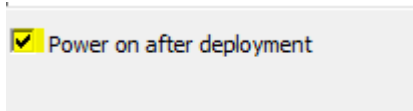
Name	Drive Type	Capacity	Provisioned	Free
 datastore1	Non-SSD	227.75 GB	4.08 GB	223.67 GB
 datastore2	Non-SSD	465.50 GB	172.45 GB	357.68 GB

- For Disk Format, select one of the three presented formats.



The screenshot shows a window titled "Deploy OVF Template" with a sub-section "Disk Format". The text asks, "In which format do you want to store the virtual disks?". On the left, there is a navigation pane with links for "Source", "OVF Template Details", "Name and Location", "Storage", and "Disk Format". The "Disk Format" section is currently active and shows "Ready to Complete". The main area contains a "Datastore:" field with the value "datastore2" and an "Available space (GB):" field with the value "357.7". Below these fields are three radio button options: "Thick Provision Lazy Zeroed" (selected), "Thick Provision Eager Zeroed", and "Thin Provision".

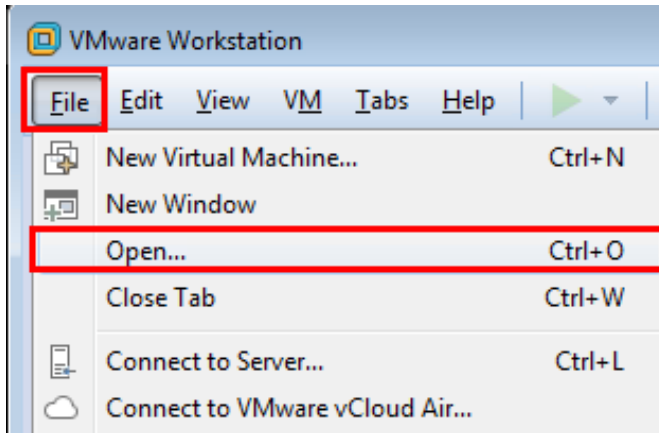
- At the Ready to Complete window, select the "Power on after deployment" checkbox.



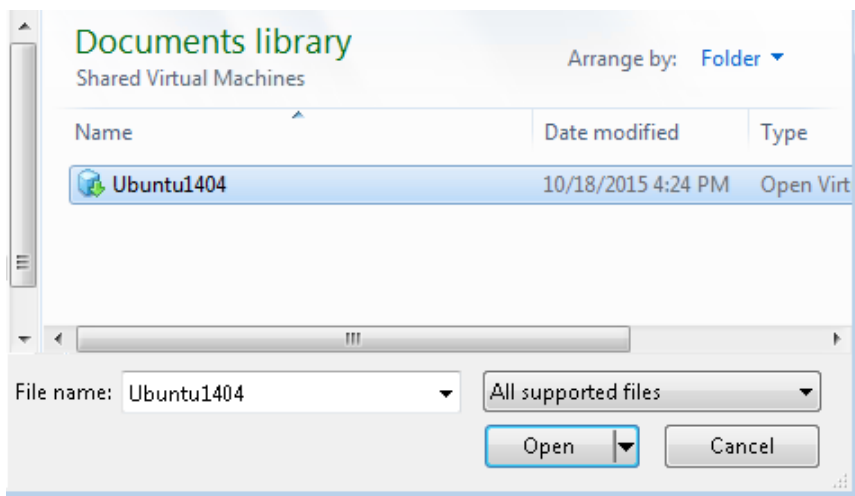
The screenshot shows a single checkbox labeled "Power on after deployment" which is checked.

2.2 VMware Workstation

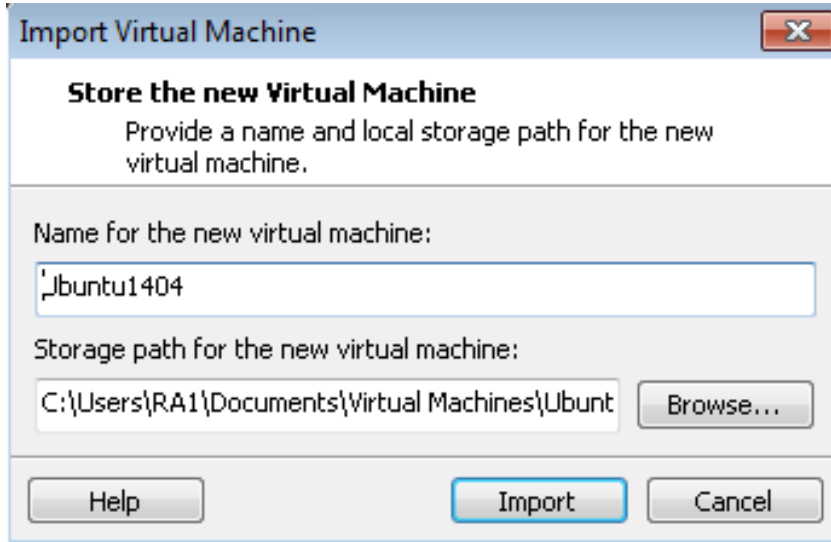
1. In VMware Workstation, from the menu, select File -> Open.



2. Select the OVA file to open.

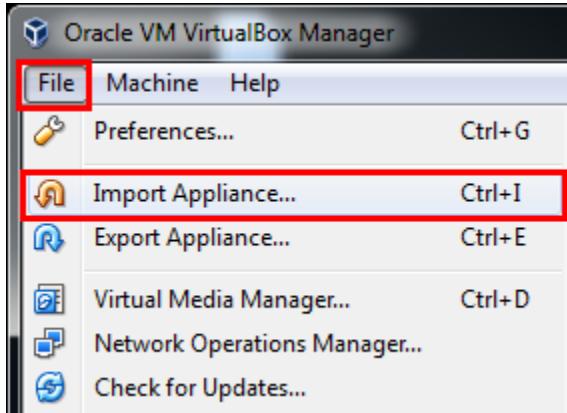


3. Click Import to import the virtual appliance.

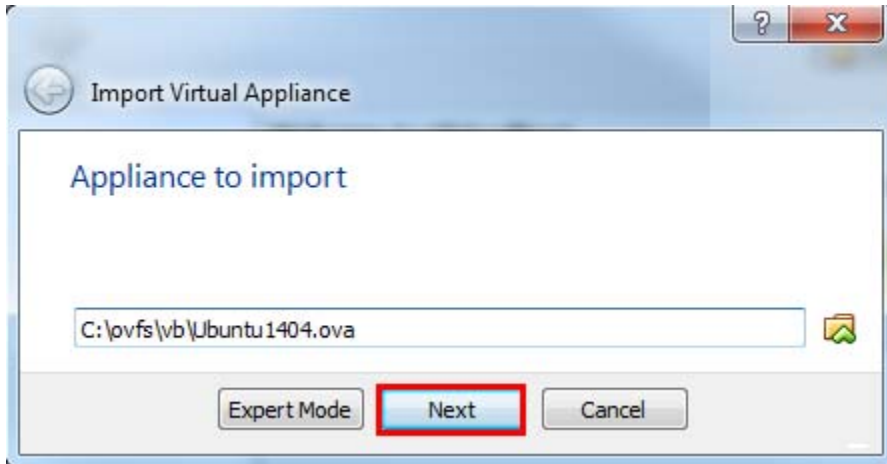


2.3 Oracle Virtualbox

1. In VirtualBox, from the menu, select File -> Import Appliance.

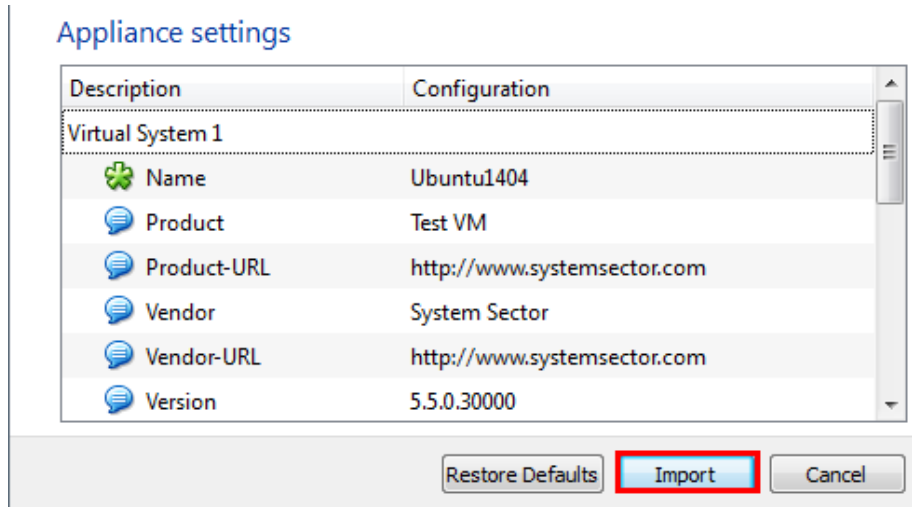


2. Browse to and select the OVA file.



Ganib Appliance Setup Guide

3. Click Import to import the virtual appliance.



2.4 Access Ganib

You can access Ganib using one of two methods-- locally or remotely.

2.4.1 Local Access

Local access requires the user to logon to the virtual machine.

1. Login into the appliance.

```
Ubuntu 14.04.3 LTS localhost tty1
localhost login: user
Password: _
```

The login credentials are:

Username: **user**
Password: **password**

Ganib Appliance Setup Guide

2. Elevate privileges:

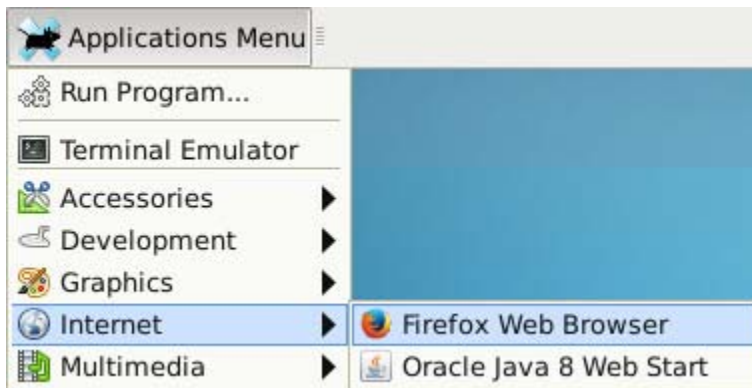
```
user@localhost:~$ sudo su -  
[sudo] password for user:
```

The password for user is **password**.

3. Start X-Windows:

```
root@localhost:~# startx
```

4. From within the virtual appliance, select **Applications Menu -> Internet -> Firefox Web Browser**.



5. From the Web browser, go to **<http://localhost:9090/>**

6. The Ganib credentials are:

Username: **admin@changeme.com**

Password: **password**

Ganib Appliance Setup Guide

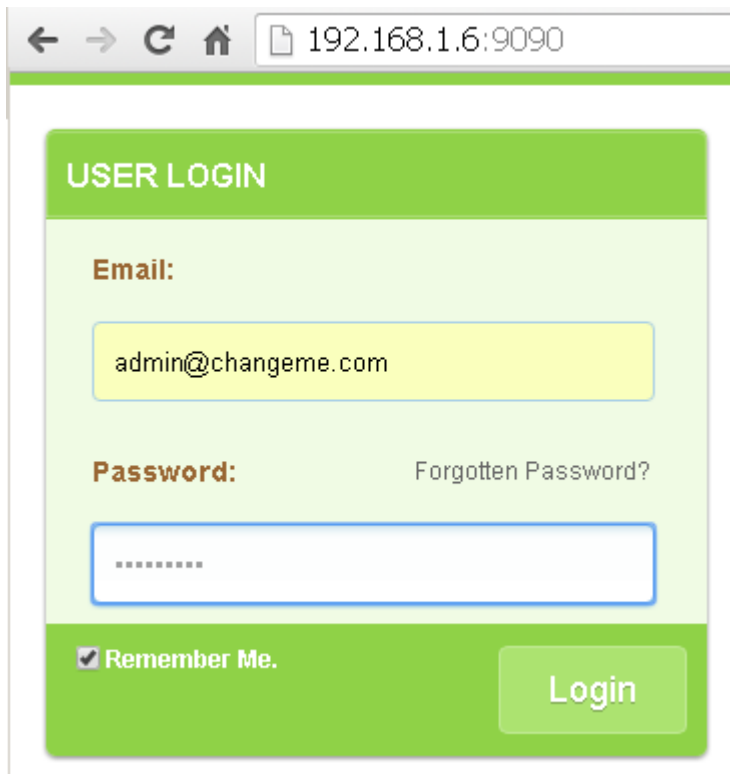
2.4.2 Remote Access

Remote access is possible if your virtual appliance has acquired an IP address either via DHCP or statically. From a workstation, all you need to do end the IP address in to the address bar of your Web browser.

1. From within the virtual appliance get the IP address by issuing the **ipconfig** command.

```
user@localhost:~$ ifconfig
eth0      Link encap:Ethernet  HWaddr 08:00:27:00:00:00
          inet addr:192.168.1.7
```

2. Enter the IP address in to the address of the Web browser:



3.0 Support

Questions about this virtual appliance can be sent to info@systemsector.com.