

MantisBT Appliance Setup Guide

1.0 Overview

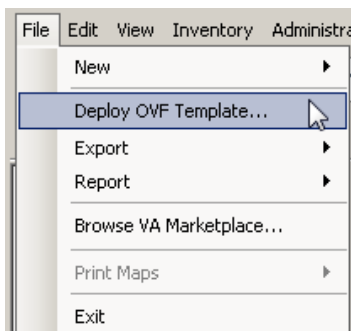
The MantisBT virtual appliance is virtual machine with a Linux operating system and an installed instance of MantisBT with all of its prerequisites.

2.0 Import Virtual Appliance

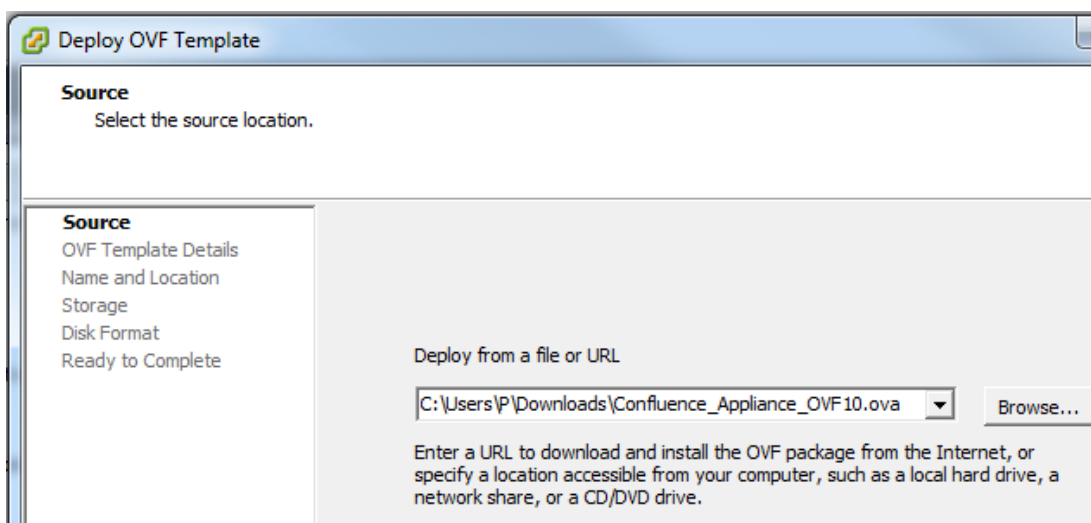
The following directions show how to import a virtual appliance into VMware vSphere, VMware Workstation, or Oracle Virtualbox.

2.1 VMware vSphere

1. In your vSphere Client, from the File menu, select Deploy OVF Template.

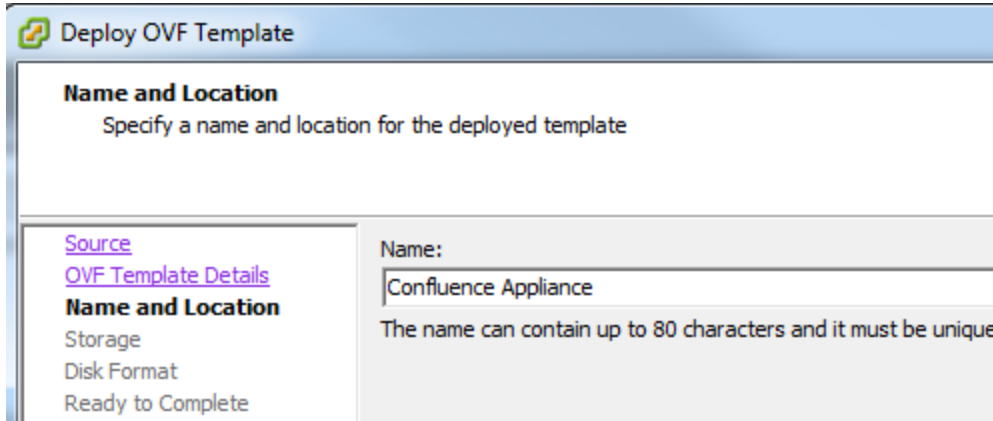


2. For Source, browse to the location of your OVA file.



MantisBT Appliance Setup Guide

- For Name and Location, give the appliance a descriptive name.



Deploy OVF Template

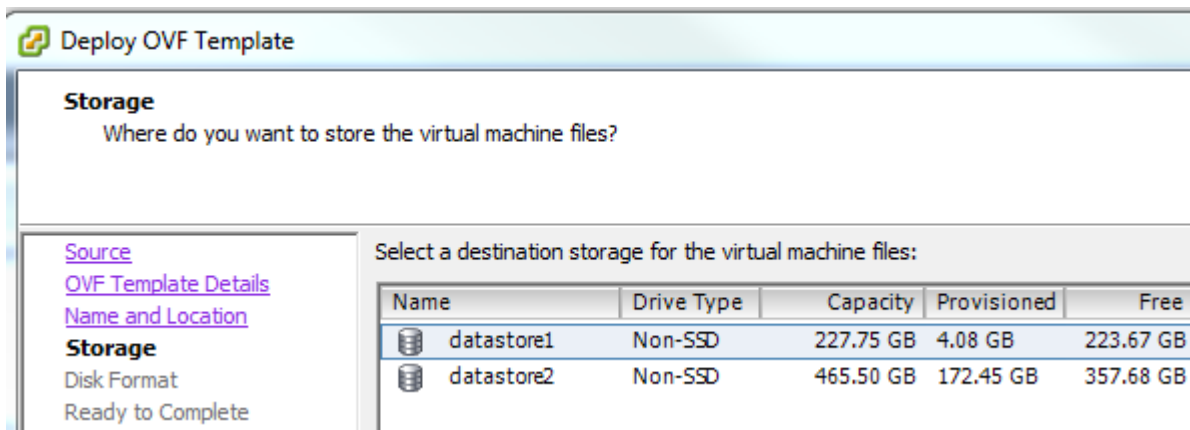
Name and Location
Specify a name and location for the deployed template

[Source](#)
[OVF Template Details](#)
Name and Location
 Storage
 Disk Format
 Ready to Complete

Name:

 The name can contain up to 80 characters and it must be unique

- For Storage, select the appropriate datastore.



Deploy OVF Template

Storage
Where do you want to store the virtual machine files?

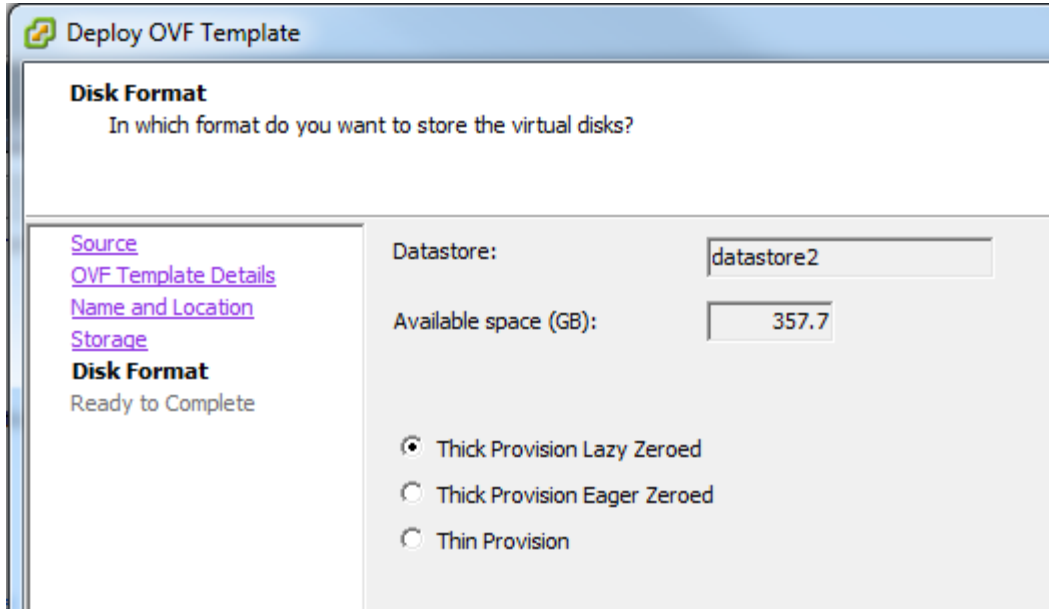
[Source](#)
[OVF Template Details](#)
[Name and Location](#)
Storage
 Disk Format
 Ready to Complete

Select a destination storage for the virtual machine files:

Name	Drive Type	Capacity	Provisioned	Free
datastore1	Non-SSD	227.75 GB	4.08 GB	223.67 GB
datastore2	Non-SSD	465.50 GB	172.45 GB	357.68 GB

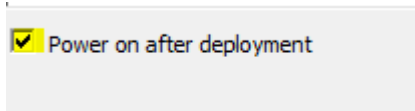
MantisBT Appliance Setup Guide

- For Disk Format, select one of the three presented formats.



The screenshot shows a web interface window titled "Deploy OVF Template". The main heading is "Disk Format" with the question "In which format do you want to store the virtual disks?". On the left, there is a sidebar with links: "Source", "OVF Template Details", "Name and Location", "Storage", and "Disk Format" (which is highlighted). Below "Disk Format" is the text "Ready to Complete". The main content area shows "Datastore:" with a dropdown menu set to "datastore2", and "Available space (GB):" with a text box containing "357.7". At the bottom, there are three radio button options: "Thick Provision Lazy Zeroed" (selected), "Thick Provision Eager Zeroed", and "Thin Provision".

- At the Ready to Complete window, select the "Power on after deployment" checkbox.

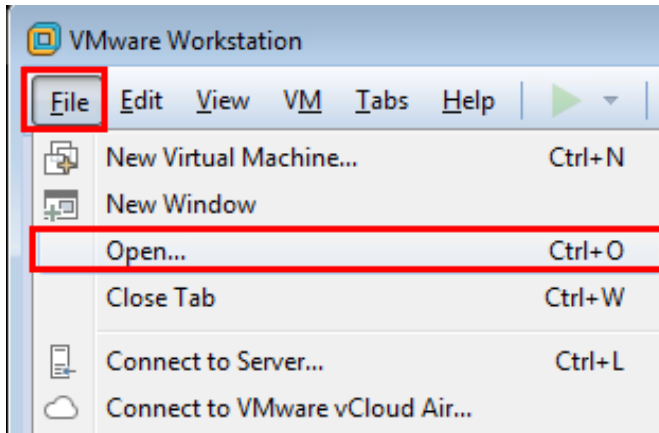


The screenshot shows a checkbox labeled "Power on after deployment" which is checked with a yellow checkmark.

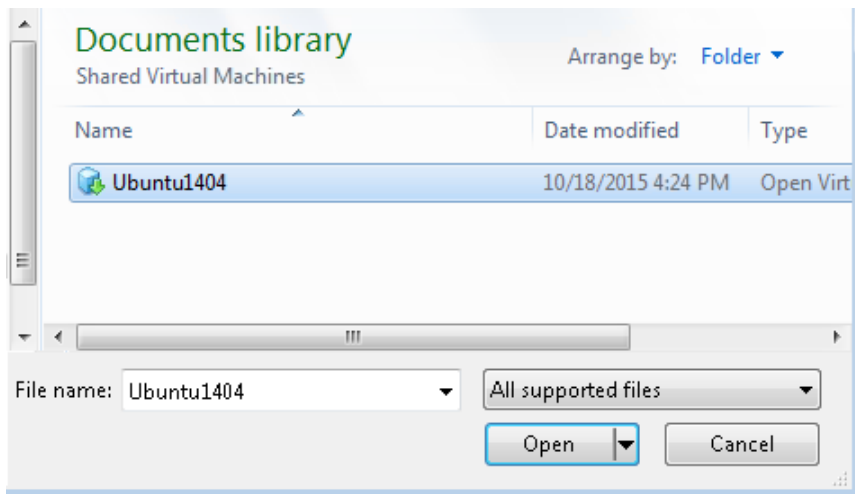
MantisBT Appliance Setup Guide

2.2 VMware Workstation

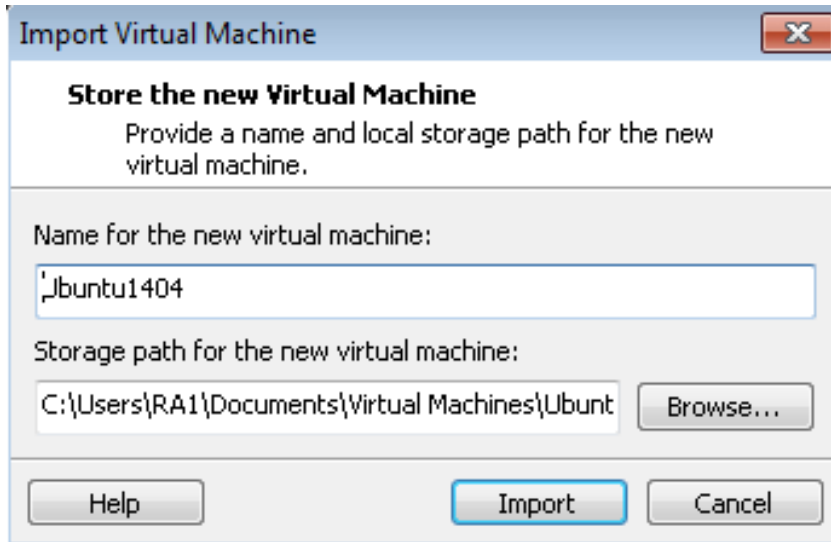
1. In VMware Workstation, from the menu, select File -> Open.



2. Select the OVA file to open.



3. Click Import to import the virtual appliance.



Import Virtual Machine

Store the new Virtual Machine
Provide a name and local storage path for the new virtual machine.

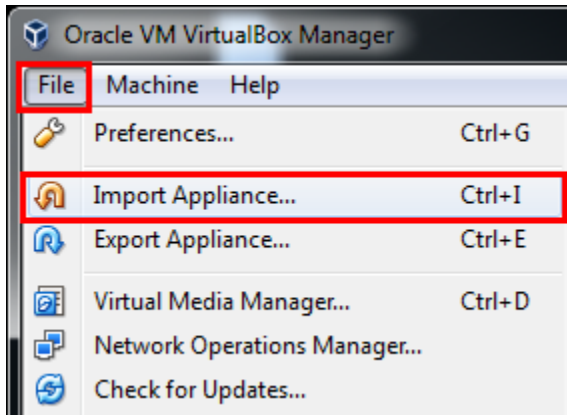
Name for the new virtual machine:
Ubuntu1404

Storage path for the new virtual machine:
C:\Users\RA1\Documents\Virtual Machines\Ubunt

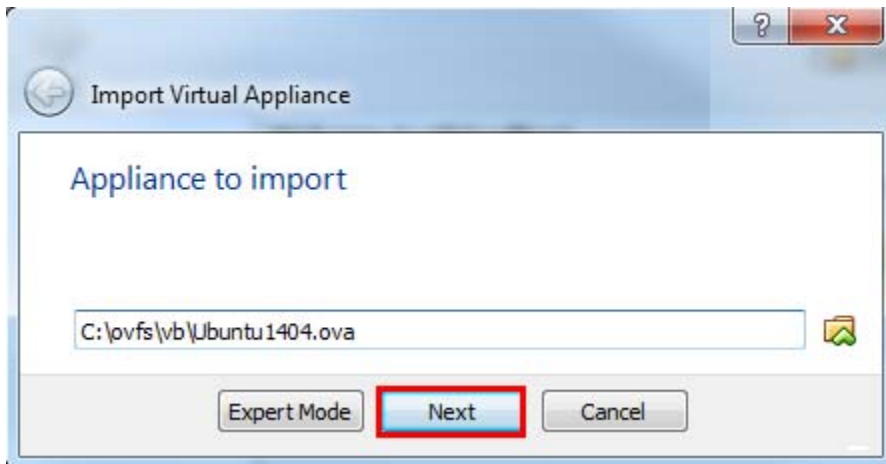
MantisBT Appliance Setup Guide

2.3 Oracle Virtualbox

1. In VirtualBox, from the menu, select File -> Import Appliance.

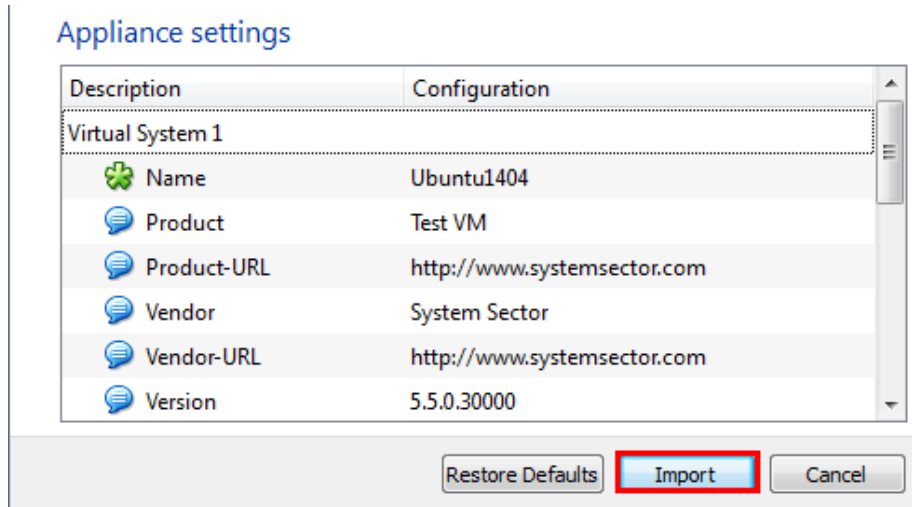


2. Browse to and select the OVA file.



MantisBT Appliance Setup Guide

3. Click Import to import the virtual appliance.



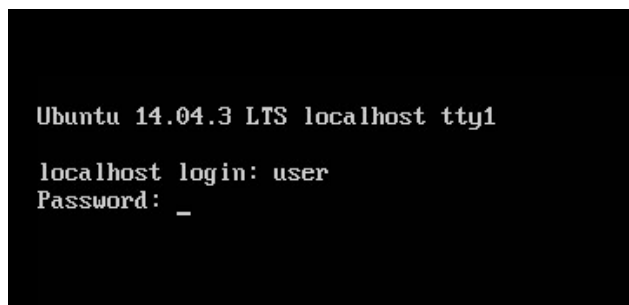
2.4 Access MantisBT

You can access MantisBT using one of two methods-- locally or remotely.

2.4.1 Local Access

Local access requires the user to logon to the virtual machine.

1. Login into the appliance.



The login credentials are:

Username: **user**
Password: **password**

MantisBT Appliance Setup Guide

2. Elevate privileges:

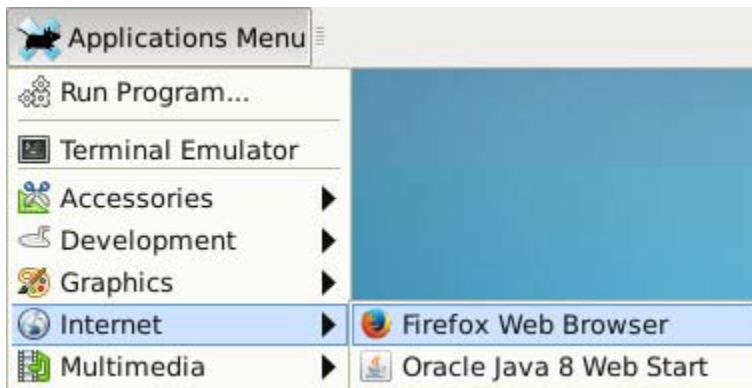
```
user@localhost:~$ sudo su -  
[sudo] password for user:
```

The password for user is **password**.

3. Start X-Windows:

```
root@localhost:~# startx
```

4. From within the virtual appliance, select **Applications Menu -> Internet -> Firefox Web Browser**.



5. From the Web browser, go to **<http://localhost/>**

6. The MantisBT credentials are:

Username: **administrator**

Password: **password**

MantisBT Appliance Setup Guide


2.4.2 Remote Access

Remote access is possible if your virtual appliance has acquired an IP address either via DHCP or statically. From a workstation, all you need to do end the IP address in to the address bar of your Web browser.

1. From within the virtual appliance get the IP address by issuing the `ipconfig` command.

```
user@localhost:~$ ifconfig
eth0      Link encap:Ethernet  H
          inet addr:192.168.1.7
```

2. Enter the IP address in to the address of the Web browser:



← → ↻ 🏠 192.168.1.14/login_page.php



Login	
Username	<input type="text"/>
Password	<input type="password"/>
<input type="button" value="Login"/>	

3.0 Support

Questions about this virtual appliance can be sent to info@systemsector.com.