

# Sweet Home 3D Appliance Setup Guide

---

## 1.0 Overview

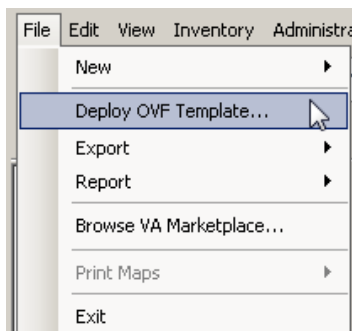
The Sweet Home 3D virtual appliance is virtual machine with a Linux operating system and an installed instance of Sweet Home 3D with all of its prerequisites.

## 2.0 Import Virtual Appliance

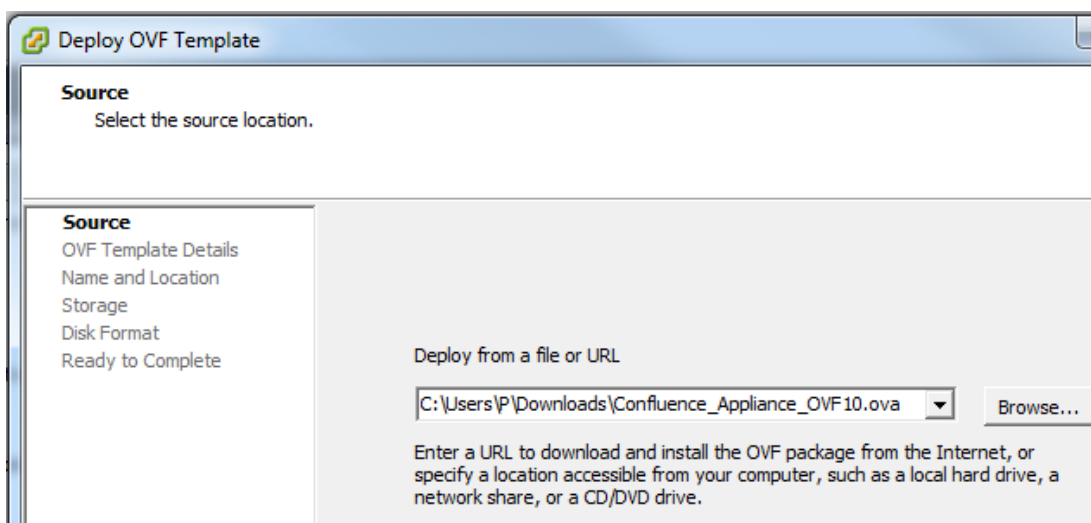
The following directions show how to import a virtual appliance into VMware vSphere, VMware Workstation, or Oracle Virtualbox.

### 2.1 VMware vSphere

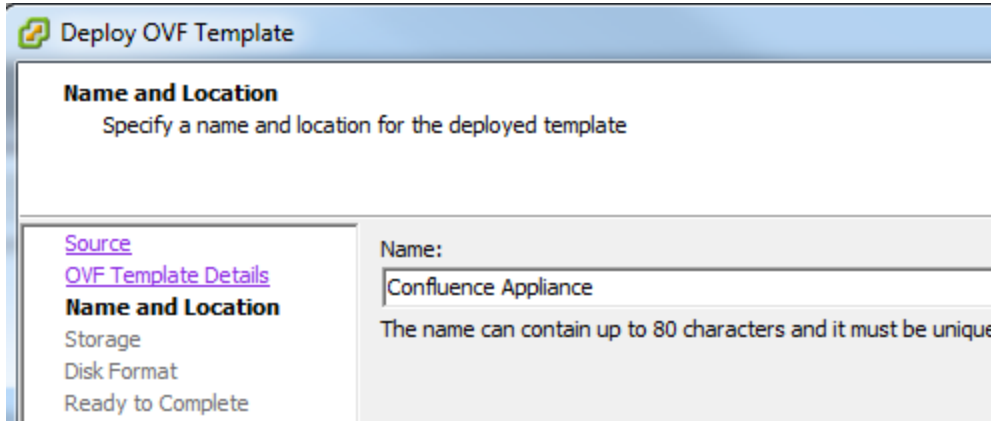
1. In your vSphere Client, from the File menu, select Deploy OVF Template.



2. For Source, browse to the location of your OVA file.



3. For Name and Location, give the appliance a descriptive name.



**Deploy OVF Template**

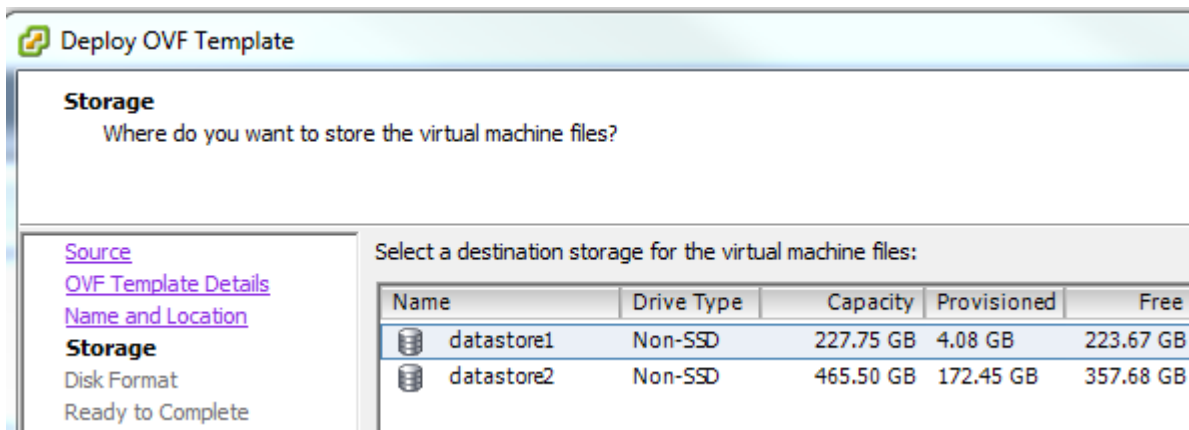
**Name and Location**  
Specify a name and location for the deployed template

[Source](#)  
[OVF Template Details](#)  
**Name and Location**  
Storage  
Disk Format  
Ready to Complete

Name:  
Confluence Appliance

The name can contain up to 80 characters and it must be unique

4. For Storage, select the appropriate datastore.





**Deploy OVF Template**

**Storage**  
Where do you want to store the virtual machine files?

[Source](#)  
[OVF Template Details](#)  
[Name and Location](#)  
**Storage**  
Disk Format  
Ready to Complete

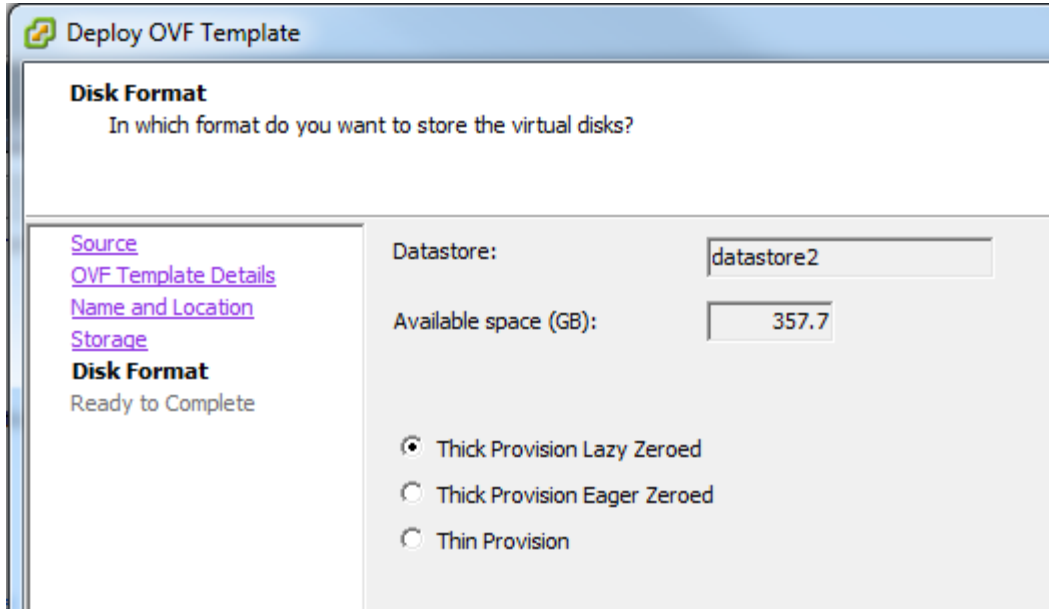
Select a destination storage for the virtual machine files:

Name	Drive Type	Capacity	Provisioned	Free
 datastore1	Non-SSD	227.75 GB	4.08 GB	223.67 GB
 datastore2	Non-SSD	465.50 GB	172.45 GB	357.68 GB

## Sweet Home 3D Appliance Setup Guide

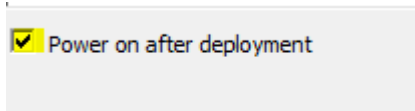
---

- For Disk Format, select one of the three presented formats.



The screenshot shows a window titled "Deploy OVF Template" with a sub-section "Disk Format". The question asks, "In which format do you want to store the virtual disks?". On the left, there is a navigation pane with links for "Source", "OVF Template Details", "Name and Location", "Storage", and "Disk Format" (which is highlighted). Below "Disk Format" is the text "Ready to Complete". On the right, there are two input fields: "Datastore:" with the value "datastore2" and "Available space (GB):" with the value "357.7". Below these are three radio button options: "Thick Provision Lazy Zeroed" (selected), "Thick Provision Eager Zeroed", and "Thin Provision".

- At the Ready to Complete window, select the "Power on after deployment" checkbox.



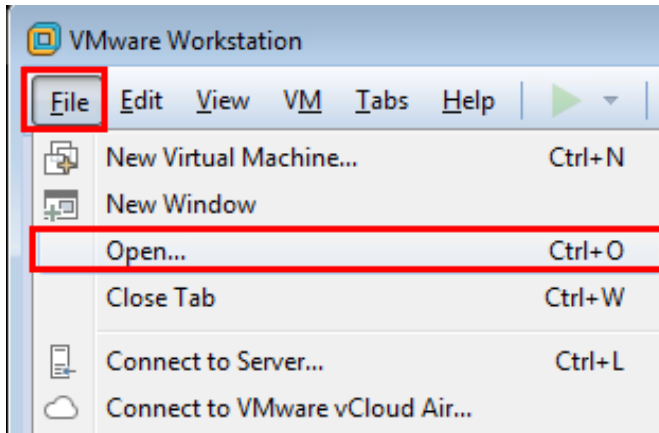
The screenshot shows a checkbox labeled "Power on after deployment" which is checked with a yellow checkmark.

# Sweet Home 3D Appliance Setup Guide

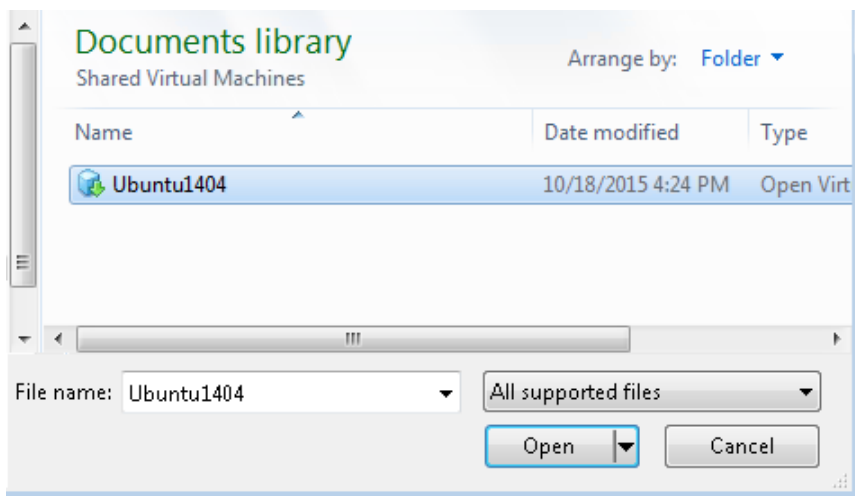
---

## 2.2 VMware Workstation

1. In VMware Workstation, from the menu, select File -> Open.



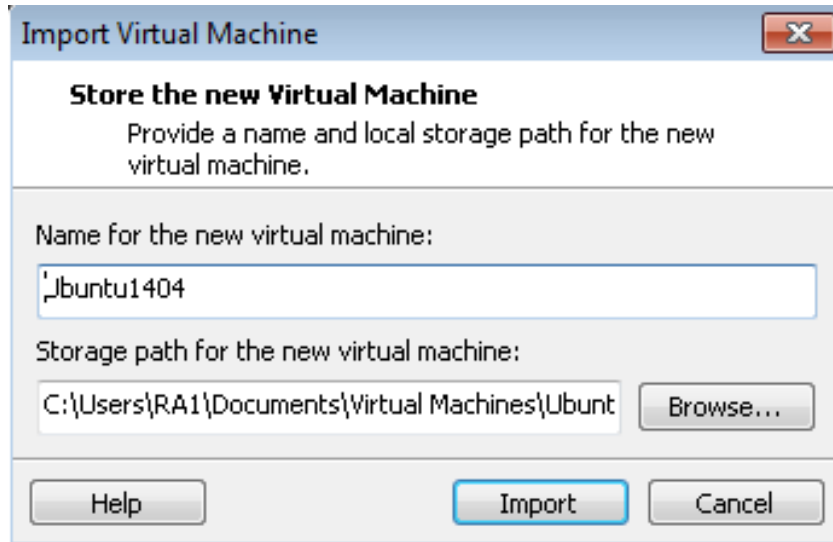
2. Select the OVA file to open.



## Sweet Home 3D Appliance Setup Guide

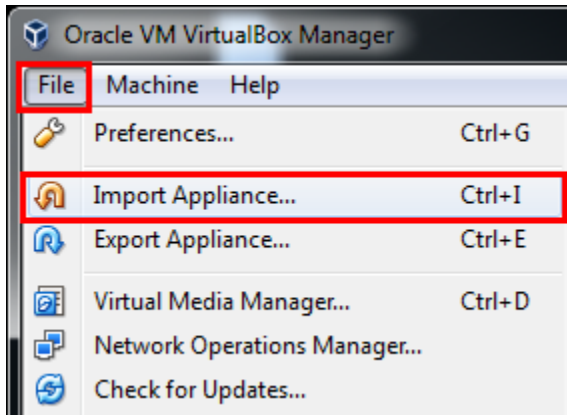
---

3. Click Import to import the virtual appliance.

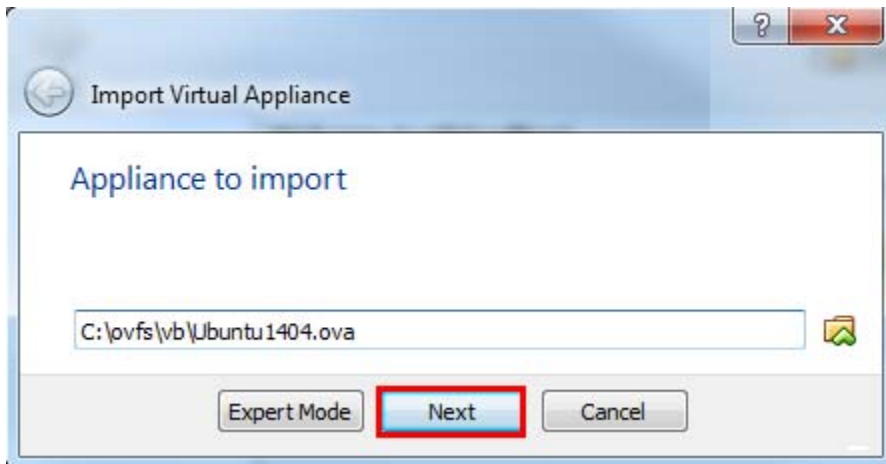


## 2.3 Oracle Virtualbox

1. In VirtualBox, from the menu, select File -> Import Appliance.



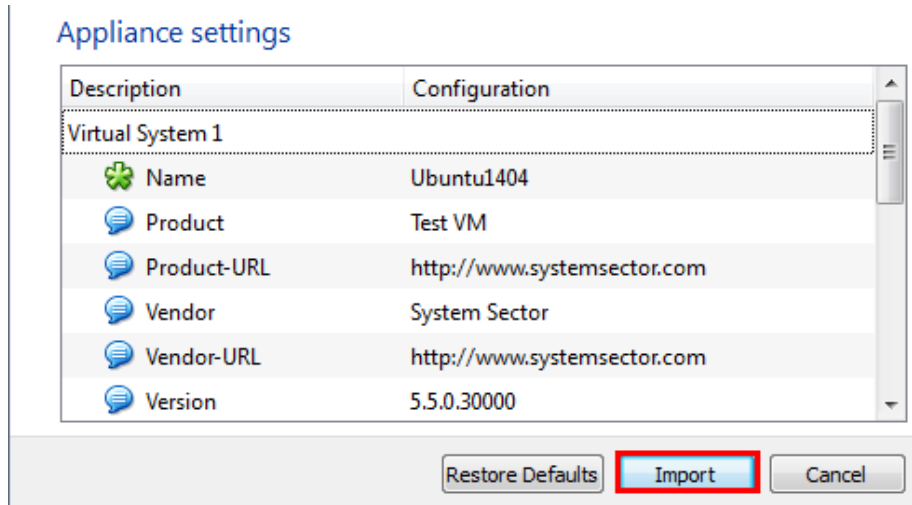
2. Browse to and select the OVA file.



## Sweet Home 3D Appliance Setup Guide

---

3. Click Import to import the virtual appliance.



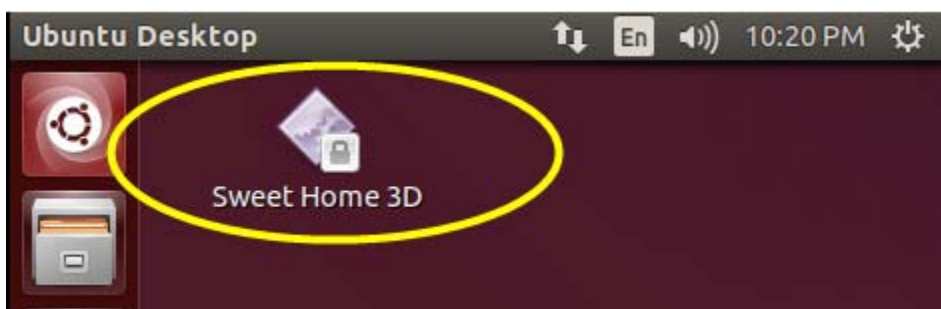
### 3.0 Access Sweet Home 3D

The credentials to log in are:

Username: **user**

Password: **password**

After log in, double-click the Sweet Home 3D icon, which is located on your desktop.



### 4.0 Support

Questions about this virtual appliance can be sent to [info@systemsector.com](mailto:info@systemsector.com).